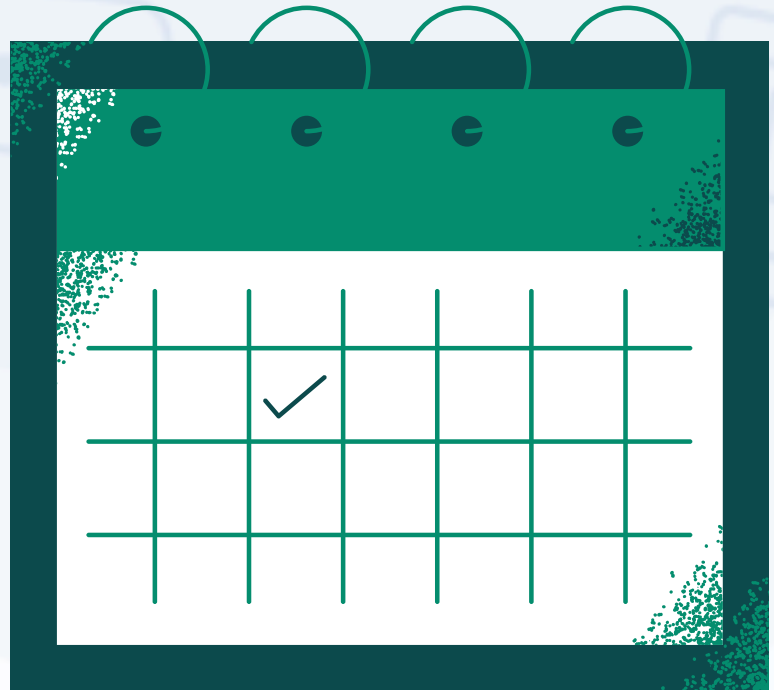


Preventative Maintenance Planning Guide

A strong preventative maintenance program reduces costly breakdowns, improves safety, and extends equipment life. This guide gives a high-level plan for service intervals and what to include for different fleet assets.

Trucks

- Daily: Pre- and post-trip DVIR inspections.
- Monthly: Fluid levels, battery check, tire pressure.
- Quarterly: Brake inspections, suspension check, lights.
- Annually: DOT annual inspection, full systems check.



Trailers

- Monthly: Tire pressure, lights, brake adjustment.
- Quarterly: Axle and suspension inspection.
- Annually: Structural integrity check, brake reline if needed.

Special Equipment

- Follow OEM recommendations for hours of operation or mileage.
- Inspect safety and hydraulic systems frequently.



Did you know an average delay for a breakdown is 20 hours! Having a preventive maintenance schedule reduces unwanted breakdowns significantly!